

Antilles Air Boats & the Grumman Goose

A BYGONE ERA IN THE HISTORY OF THE VIRGIN ISLANDS



About the Plane

First flown in 1937, the G-21 Goose was Grumman's first single-wing aircraft, its first twin-engine aircraft, and its first aircraft used as a commercial airliner. Capable of alighting on water or land, this remarkable aircraft has served for many decades in a variety of roles that have confirmed the strength and durability of its original design. The G-21 was designed as an "air yacht" for wealthy New York businessmen, so they could commute from their homes on Long Island to their Manhattan offices. It soon found a market as an airliner, military transport, and utility aircraft. With the coming of WWII, the U.S. Navy and Coast Guard operated 169 "Gooses" designated as JRFs in utility, transport, and antisubmarine duty. In total, the air forces and navies of eleven nations flew the Goose. After World War II, small airlines in Alaska, the Caribbean, and California adopted G-21s due to its unique attributes that make it fit for travel in virtually any environment.

The Goose still flies today, in its original form and also modified with turboprop engines for increased performance. For over fifty years the rugged and versatile G-21 performed its daily tasks providing much needed service carrying passengers and freight throughout the world.



ANTILLES AIR BOATS

ST. THOMAS 4-1776 • ST. CROIX 3-1776

**SCHEDULED SEAPLANE SERVICE LINKING
MIDTOWN ST. THOMAS, ST. CROIX, ST. JOHN,
TORTOLA AND FAJARDO**

EFFECTIVE FEB. 1968
Flights marked with asterisks
do not operate Sundays

ST. CROIX to ST. THOMAS	ST. THOMAS to ST. CROIX	ST. THOMAS to TORTOLA	ST. CROIX to TORTOLA
Dep: 8:11 Arr: 8:25	Dep: 7:45 Arr: 8:10	Dep: 7:15* Arr: 7:30	Dep: 12:00* Arr: 12:25
8:21 8:45	8:00 8:25	10:55* 11:10	1:00* 1:45
8:26 8:50	8:15 8:40	3:30* 3:45	
8:31 9:15	8:45 Super Goose* 9:15		
9:20 Super Goose* 10:00	9:05 9:30		
10:15 10:40	9:35 10:00		
10:30 10:55	9:55 10:20		
11:00 11:25	10:40 11:05		
11:30 11:55	11:15 11:40		
12:20 12:45	11:45 12:10		
1:05 1:30	12:30 12:55		
2:05 2:30	1:25 1:50		
2:45 3:10	2:25 2:50		
4:00 Super Goose* 4:30	3:15 Super Goose* 3:45		
4:10 4:35	4:15 4:40		
4:30 4:55	4:25 4:50		
4:45 5:10	4:45 5:10		
5:00 5:25	5:00 5:25		
5:15 5:40	5:15 5:40		
5:31 5:55	5:31 5:55		

ST. CROIX to ST. JOHN
Dep: 9:40 Arr: 10:05
9:50 10:25

ST. JOHN to ST. CROIX
Dep: 10:30 Arr: 10:35
3:30 3:35

FARES

ST. THOMAS to FAJARDO \$10.00 rd. trip \$20.00
ST. THOMAS to ST. CROIX \$8.00 rd. trip \$15.00
ST. THOMAS to TORTOLA \$7.00 rd. trip \$14.00
ST. CROIX to ST. JOHN \$10.00 rd. trip \$20.00
ST. CROIX to TORTOLA \$12.00 rd. trip \$24.00
ST. CROIX to FAJARDO \$15.00 rd. trip \$ 30.00

PLEASE
present your ticket
15 minutes prior to
departure time
at Antilles Offices

ST. THOMAS to FAJARDO
Dep: 9:00* Arr: 9:05
9:00* 9:25
2:30* 2:55
2:50* 3:15

FAJARDO to ST. THOMAS
Dep: 9:20* Arr: 9:45
9:40* 10:05
3:00* 3:25
3:30* 3:55

WORLD'S MOST EXPERIENCED SEAPLANE PILOTS

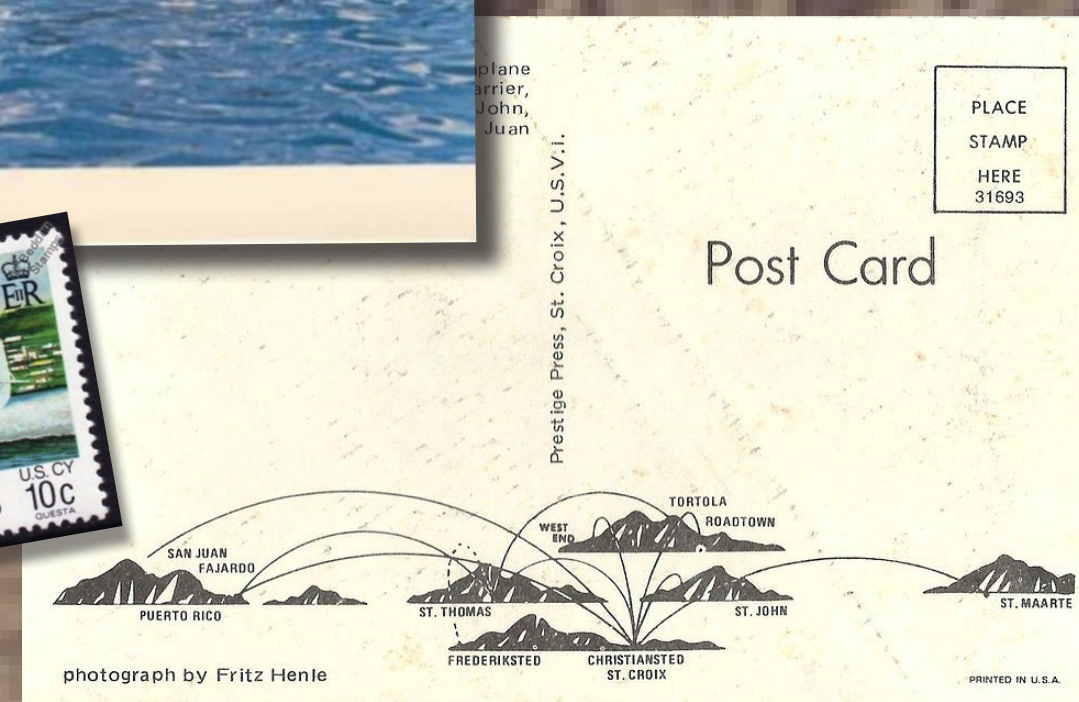
About Antilles Air Boats

In 1963, Captain Charles F. Blair, a famed aviator, put down \$10,000 on a Grumman Goose, hired five employees and started an airline. With that modest investment and a dream about convenient, economical, downtown-to-downtown air service, Capt. Blair and his wife, movie actress Maureen O'Hara built Antilles Air Boats into the largest seaplane service in the world and the mainstay of inter-island air transportation for Virgin Islanders, with service to St Thomas, St Croix, and St Johns in the USVIs, Fajardo and San Juan, Puerto Rico; and Tortola, BVI.

From February 1964 to September 1981, Antilles Air Boats flew over 380,000 flights and carried over 2.8 million passengers. The Goose at Antilles Air Boats operated with ten passenger seats and at its peak, flew between St. Thomas and St. Croix (one of its many routes) every twenty minutes during daylight hours. This frequency allowed for business and government officials to meet their demanding schedules as well as giving the locals and tourist the important connection between the islands. The sight and sound of the Grumman Goose in the harbor at Charlotte Amalie during those years was truly part of island life.



The Goose / Virgin Islands



- On Display At Yacht Haven Grande -

is a 1/3 scale model of a Grumman G-21A which was operated as a commercial travel aircraft out of Charlotte Amalie Harbor and throughout the US Virgin Islands from the 1960s to the 1980s.

