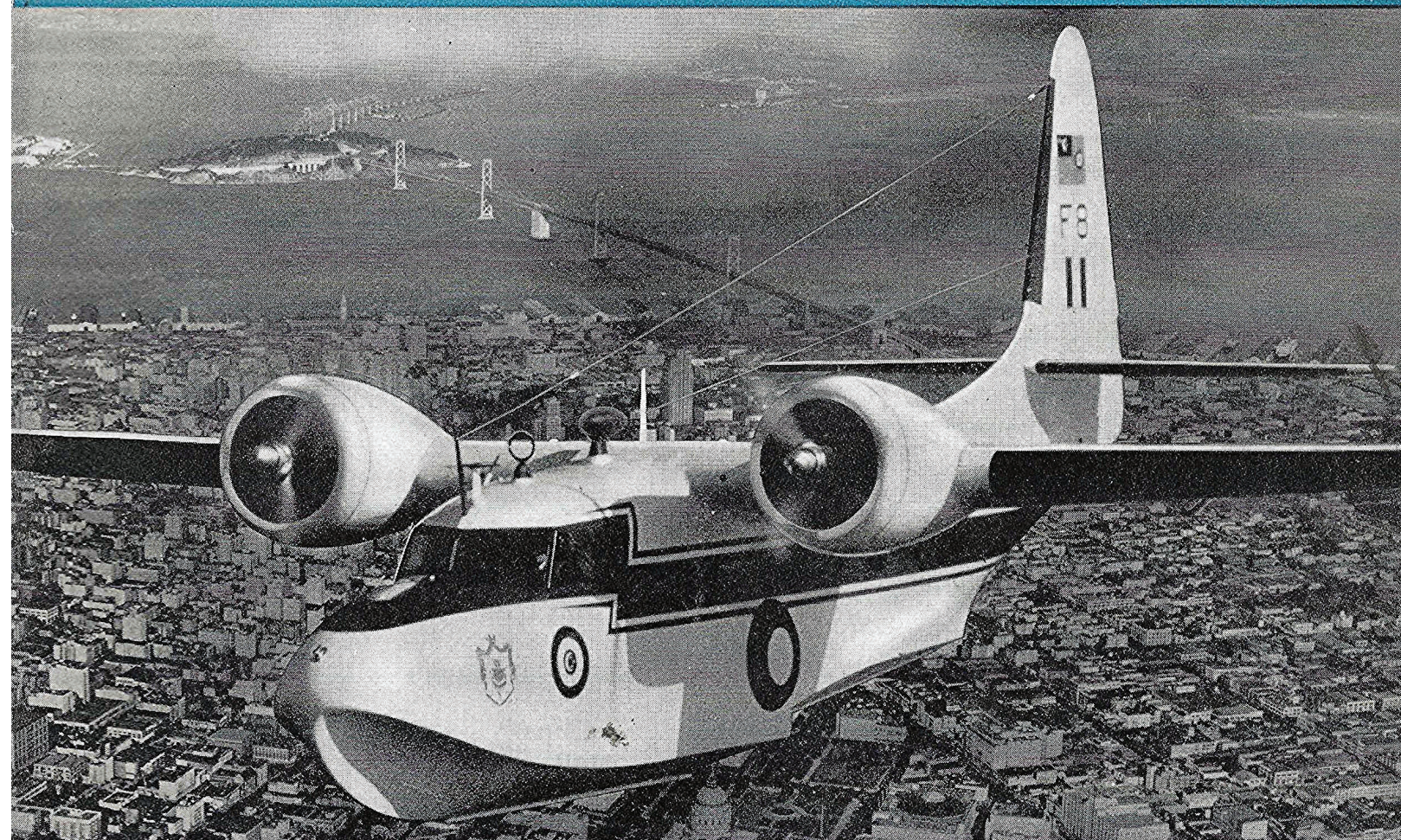


AVIATION WEEK

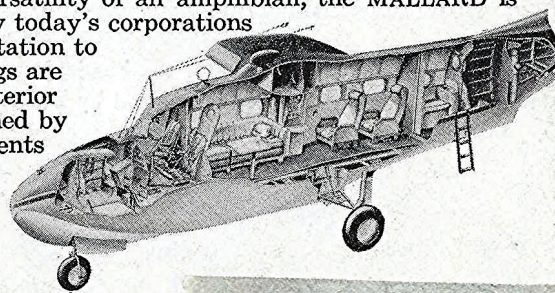
A MCGRAW-HILL PUBLICATION

JAN. 30, 1950



The Grumman MALLARD

In two hours this new, 1950 GRUMMAN MALLARD will be almost four hundred miles away from the City on the Bay! The only executive aircraft to combine the speed of a land plane with the versatility of an amphibian, the MALLARD is depended upon by today's corporations for swift transportation to places where things are happening. Its exterior sleekness is matched by interior appointments which provide luxurious comfort for eight passengers.



GRUMMAN AIRCRAFT ENGINEERING CORPORATION, BETHPAGE, LONG ISLAND, NEW YORK