

HELICOPTER HOLIDAY

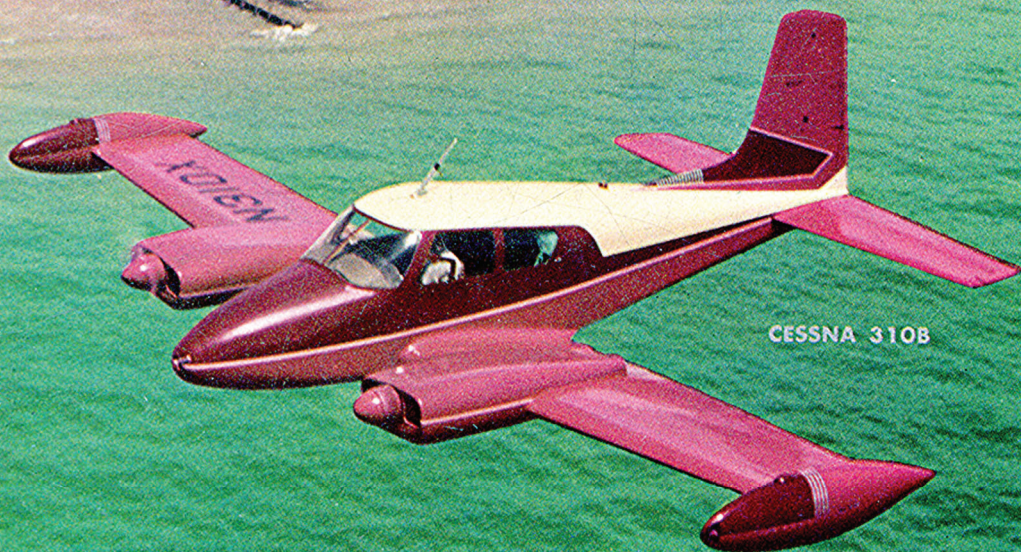


# FLYING

THE WORLD'S MOST WIDELY READ AVIATION MAGAZINE

MARCH

50 CENTS

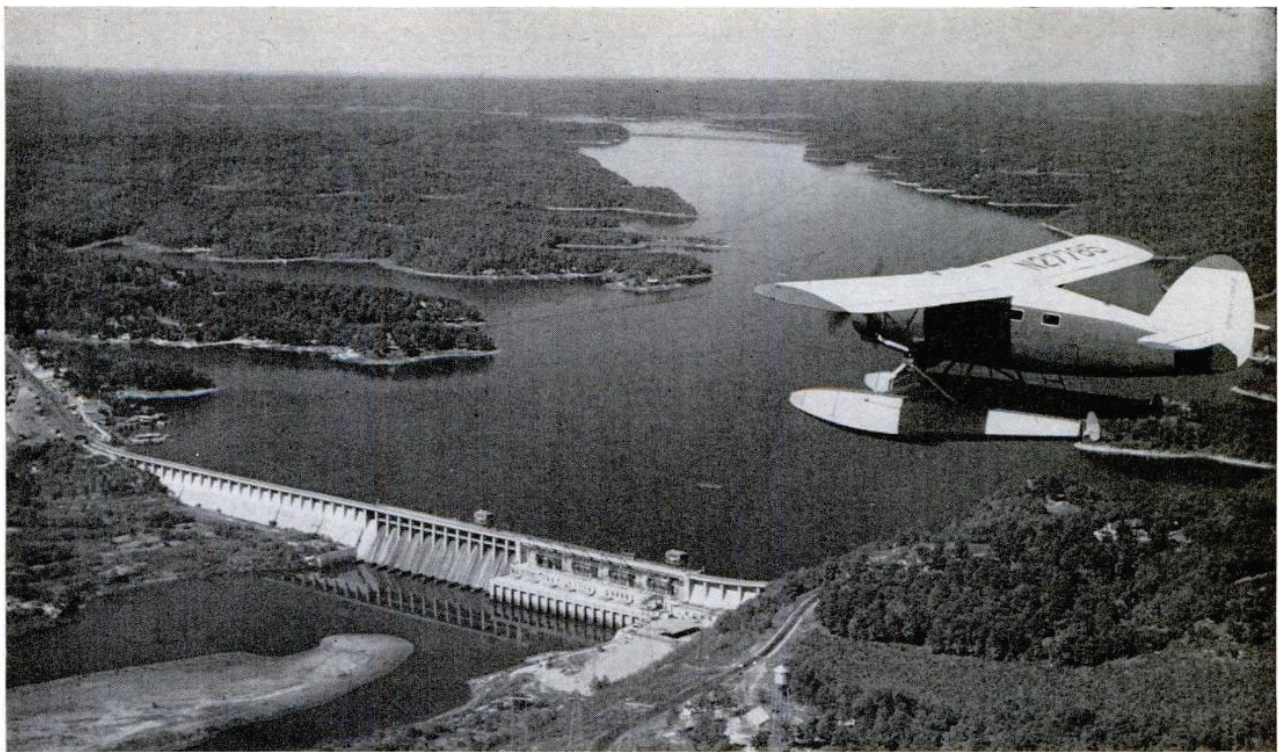


CESSNA 310B

**Reports on three aircraft:**

**CESSNA 310C \* FRENCH BABY JODEL \* THE SEABEE**

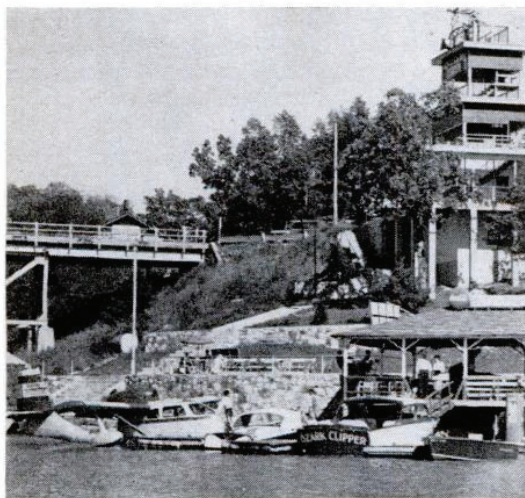
Copyrighted material



Sightseeing by air over Bagnell Dam, which formed the Lake of the Ozarks on the Osage River in 1931.



Above: Angler's delight—Ha Ha Sonk Spring Branch. Below: A Seabee snuggles up to the dock along with various other pleasure craft.



*A veritable sportsman's paradise in the heart of Missouri is the huge, winding*

## LAKE of the OZARKS

By NOVETAH DAVENPORT

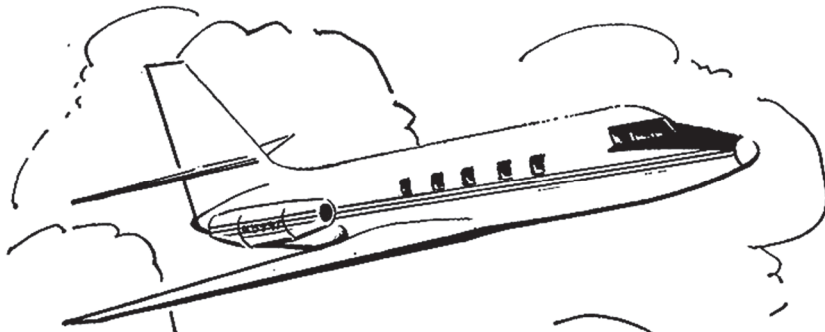
**I**N SOUTH CENTRAL Missouri, embedded as a jewel in the wooded surrounding Ozark Hills, is Lake of the Ozarks, called by native Missourians "mid-America's fastest growing vacationland."

Focal point and creator of this vast recreational area is Bagnell Dam which, when constructed as a power project in 1931, backed up the Osage River and its tributaries to impound some 60,000 acres of water with a winding shoreline of 1,372 miles framed by rustic beauty, and formed a main river channel 129 miles long.

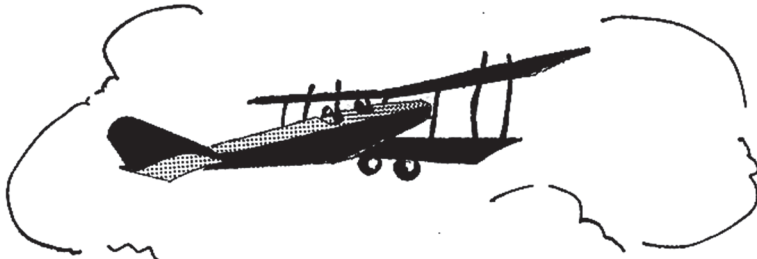
Now developed into a family playground, readily accessible to all over good highways or by private airplane, the area offers over 300 resorts and camps scattered throughout the coves, peninsulas and rocky outcrops along the lakeshore front and overlooking inland acres.

Equidistant, give or take a few miles, between Jefferson City, the state capital at the northeast, and Springfield, Mo. to the southwest, Lake of the Ozarks is roughly divided into eight major centers—Gravois Mills, Hurricane Deck, Camdenton, Bagnell Dam, Osage Beach-Grand Glaize, Versailles, Eldon, and Headwaters.

Vacation activities are as plentiful and as varied as individual tastes may demand; and living accommodations, equally selective. Anything from modest fishing cottages—with or without housekeeping (*Continued on page 68*)



**WHATEVER YOU FLY...**



**JENNY OR JET**

Everything from a minor adjustment to a complete overhaul is available for your aircraft at **NEWARK AIR SERVICE** . . . every day of the week.

One-stop service around the clock provides for complete communications and navigational systems service . . . all octane fuel service, including jet fuel . . . in-flight food service . . . weather service . . . and makes available 43,000 square feet of storage area.

You'll enjoy the comfort of air-conditioned private offices for your personal use . . . the modern lounge and many extra conveniences at NAS . . . only 10 minutes from downtown Newark—20 minutes from the heart of New York City. Write for free brochure.

Member:  
NBAA  
NAMC



**NEWARK AIR SERVICE**

Hangar 12 • Newark Airport • Newark 5, N. J.  
Phone: Market 2-5128 API 357 • UNICOM 123.0  
CAA Certified Repair Station #105



**WAIT, JOE!** AIRTEX can help you make it look like new again! AIRTEX replacement cushion sets, headliners, wallpanels, carpets recover envelopes, recovering supplies, dope—AIRTEX has everything! made so that you can DO-IT-YOURSELF! Write for AIRTEX catalog today; mention make and model of your plane for complete details.

*Airtex Products*

105-109 E. BRIDGE STREET  
MORRISVILLE, PA.

**Lake of the Ozarks**

(Continued from page 39)

facilities—to motor courts or hotels are available in a setting of one's own choice, and at modest rates.

In normal tourist months, May through September, there are water sports of every conceivable type, scenic airplane rides, speedboat and excursion boat trips, horseback riding, tennis, hunting and golf, You name it. Fishing is, of course, a sport that takes top billing in the rivers and lake areas of Missouri and there is no closed season for either main lake or river fishing. Non-resident fishing permits cost \$5, with a 10-day permit available for \$3 at any Missouri town or from the State Conservation Commission at Jefferson City. Float fishing, said to have originated in the Missouri Ozarks at the turn of the century, is increasingly popular. As time and inclination permit, the visitor may float-fish a half day or two weeks. Commercial guides, camping equipment and cooks are available in several locations. A day's trip will average between \$15 and \$20 per day. All the fisherman needs do is bring along his own tackle.

Three events are held annually at Camdenton: The J Bar H Ranch World Championship Rodeo, July 7-12; the Lake of the Ozarks Dogwood Festival, May 8-10; Heart of America Square Dance Festival June 5-7, and International Square and Round Dance Festival. Camdenton is known also for scenic Bridal Cave, situated on the Niangua Arm of the Lake. Millions of years old, the cave is one of its major attractions.

A guided tour of Bagnell Dam, which cost \$30 million to build (given seven days a week from 8:30 a.m. to 4 p.m., without charge), is a stirring experience. Visits to the utterly beautiful underground caves—a number of which surround the lake and are reached either by boat or highway—attract over 100,000 tourists a year. The Lake of the Ozarks State Park, a 17,000-acre development, lies just south of the Dam and therein alone are many types of recreational facilities, including two public beaches.

The scenic airplane ride concession has come into its own here, according to Alan Hoffsommer of St. Joseph, Mo., who since 1948 has flown 5,000 hours in passenger-hopping over the lake. Still using the old barnstormer tactics to entice vacationers to part with hard-earned cash for a few minutes of glamour in the air, Hoffsommer is one of several seaplane operators engaged in this practice in this great vacation spot.

For the private pilot who may wish to fly in under his own power, besides seaplane facilities, there are landing strips at Eldon, Linn Creek, Camdenton, Versailles. All are found on the Kansas City Chart. Just a few minutes from the Osage Beach-Grand Glaize area is Linn Creek airport, with cabin facilities, car rental, gas, tie-down and repair service. Eldon boasts a modern Air Park and Camdenton, hub city of the Lake, a municipal airport. Linn and Camdenton are off U. S. Highway No. 54; Eldon and Versailles off State Highway No. 52. For information, write Missouri Division of Resources and Development, Jefferson City, Mo. END

FLYING—March 1959