

Bimini Has Long Been Enjoyed

By HELEN DUNCOMBE

As one who has known Bimini intimately for more than 30 years, it is perhaps appropriate for this writer to add something to the article: "Bimini: It's Really a Very Lovely Spot" which appeared in The Miami Herald recently.

It is only fair to say that Bimini is far from being a comparatively unknown and undeveloped spot.

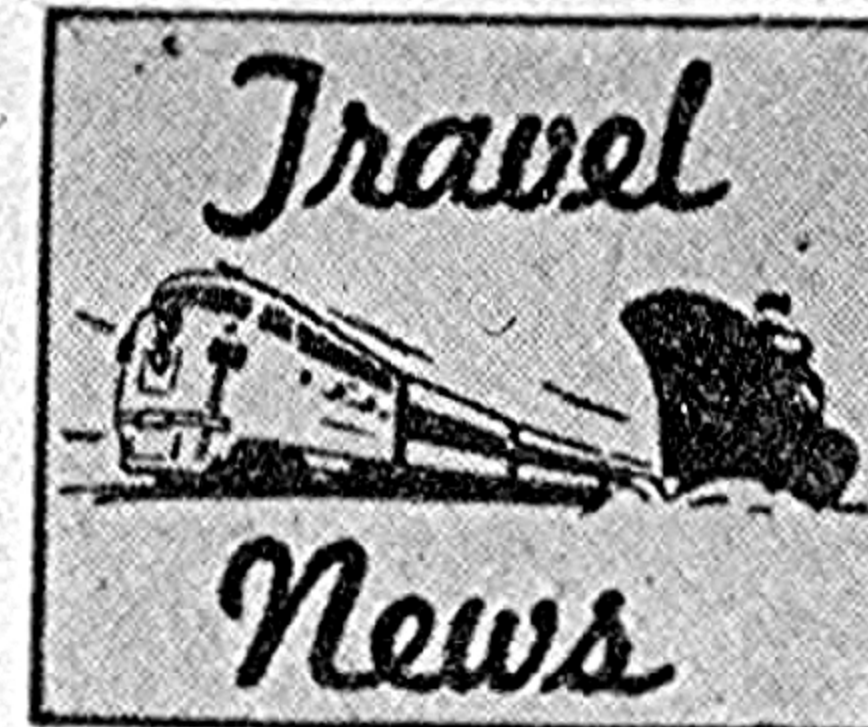
For many years, sportsmen and yachtsmen have found Bimini and its beautiful waters attractive and restful, "far from the maddening crowd"; as long ago as 1919 a bonefish record was made by a visiting sportsman, and since 1933, when the first billfish—marlin and sailfish—as well as the giant tuna, were taken on rod and line, Bimini has been a mecca for the world's most renowned fishermen.

It was not reserved for a newcomer from the United States to introduce the amenities of life to the island, nor to build the first comfortable and modern hotel.

The pioneer work in this direction was done by an Englishwoman as long ago as 1934 and her example was shortly followed by a Nassauvian and then by two forward-looking residents of Bimini.

Their hostelries may not be showy or pretentious, but they are clean and well-kept and cater to all the important necessities of life. It is not necessary to have "push" decorations or "swankily-furnished apartments" and indeed, the kind of people who have hitherto enjoyed the simple life

In February The Herald travel section carried a story about Bimini which drew protest from Mrs. Helen Duncombe of the island's The Compleat Angler, a small inn. She requested an opportunity to prepare an article on the same subject and it follows.



derive a revenue from some source, therefore a duty or tariff is placed upon all imports.

This duty is calculated by taking the original value of the article, adding to it the cost of freight, and assessing the duty on the total value of the goods as delivered to the importer.

This duty varies to some extent but taken as a whole works out at approximately 27½ per cent, and this naturally makes meals or any kind of service expensive.

With regard to (2), the airline services. For many years the only airline upon which Bimini could depend was Chalk's Flying Service, originally started by Captain A. B. Chalk, an experienced and pioneer airman.

He was eventually joined by Captain Paul Horvath and Captain Dean Franklin, and to these three men Bimini owes a great debt of gratitude for many kind services of a volunatry nature.

We now have an airstrip on South Bimini so that land planes can be accommodated and Bahamas Airways (a subsidiary of B.O.A.C.) from Nassau, and Mackey Airlines from Fort Lauderdale both land there, but it is entirely misleading to say that "the round trip ticket runs \$15."

of Bimini greatly deplore the changed appearance of the south end of the island, as they approach this beautiful harbour from the Gulf Stream.

Two points in the earlier article that really cry out for attention are (1) the assertion that "a weekend at Bimini is relatively inexpensive" and (2) that "it is serviced by three airlines — Mackey, B.O.A.C. and Chalk's Flying Service, and the round-trip ticket runs \$15."

With regard to (1), it is important for visitors to realize that Bimini can never be "relatively inexpensive", as far as one can see, and for quite good and sufficient reasons, the main one being that all foodstuffs, whether fresh, frozen or canned, have to be imported, and this includes ice and drinking water. The same applies also to gasoline, fuel-oil, building materials, etc., etc.

Now, there is no Income Tax in the Bahamas, and the government must somehow

In the case of Mackey Airlines this is true, but the fare by B.O.A.C. is higher, and Chalk's Flying Service operates entirely by charter.

In conclusion, it may not be amiss to point out that as long as Bimini remains the quiet unassuming little island it has hitherto been, just so long will visitors from the

hurly-burly of life in big cities enjoy it, but if new-comers from those same big cities try to change its character, the people who have always taken pleasure in the peace, the restfulness and the quaintness of a different kind of life, will most certainly seek those joys elsewhere and Bimini will be left bemoaning its fate.

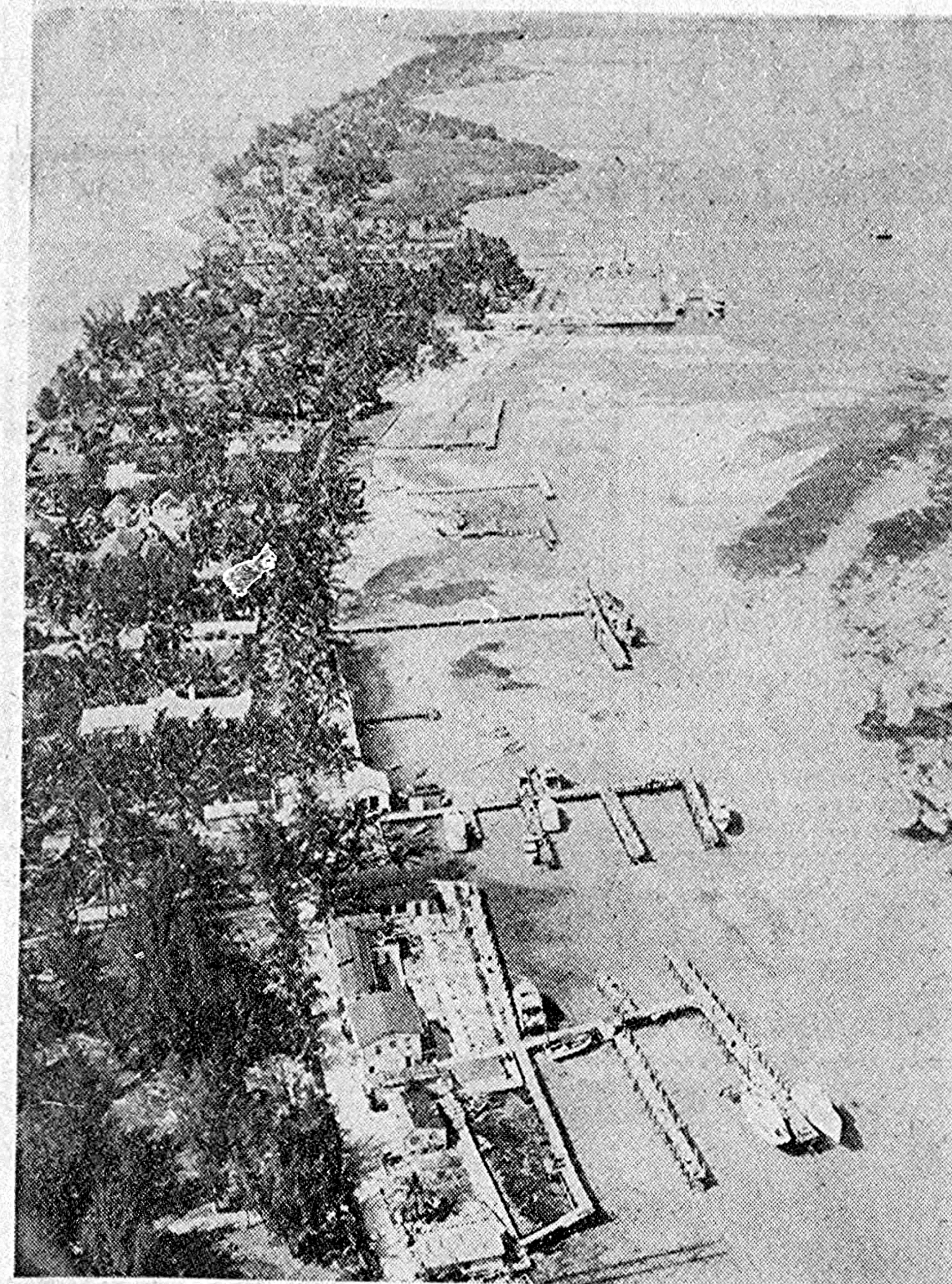
Penguins Go Formal

A parade takes place every night on Phillip Island in Australia. The procession is a formal affair, since the paraders are penguins, marching in from the sea to sleep in the sand dunes.

Sunset is the signal for the penguins to waddle onto the west sand and form regular lines. Looking neither left nor right, the birds parade directly in front of tourists who gather to watch the spectacle with lighted torches.

A few penguins always trip over the low ridges and loose pebbles. Embarrassed by their clumsiness, they hastily pick themselves up and get back in line. Others get so flustered that they rush back into the sea until the crowd of onlookers disappears.

Phillip Island and its strange parade is an hour's drive from Melbourne, according to Pan American Airways, which serves Australia from the West Coast via Honolulu and the Fijis.



BIMINI'S SPACIOUS DOCKS, able to accommodate a host of fishing and cruising craft, are almost empty as the fishing fleet heads to sea to stalk blue marlin, white marlin, sailfish and tuna

in the nearby waters of the Gulf Stream. Site of several important fishing tournaments yearly, Bimini has produced a host of world record catches.

—Bahamas News Bureau Photo

**LOW
SUMMER
RATES
IN
NASSAU!**

THE *Prince George* HOTEL
NASSAU, BAHAMAS

In the heart of the city, on the edge of the sea! Modern air-conditioned rooms . . . excellent food and cocktails.



See your travel agent today!